



MN

MARE NOSTRUM

QUINTESSENTIAL LUXURY





THE BEST THING ABOUT A VACATION  
IS GETTING AWAY FROM EVERYTHING ELSE...



# A B O U T

Establishing his roots in 1983, Mr. Kadir Turhan constructed his first gulet at 16 meters length with dreams of starting his career hosting Blue Cruise yachting.

With growing interest and success, there began a constant renewal of gulets until today totaling 9 with the latest addition being the famous Mare Nostrum built in 2008. This gulet is considered to be one of the top charter gulets in Turkiye.

Run by family members and holding the flag high as a successor, son Galip Turhan has taken over the role.

Throughout the years, the company's success has mainly been derived from valuable guest expectations rather than any personal gains.







IDEAL





M

A bubble bath on board.  
Under the sun and under the stars..  
The choice is yours.  
*Or maybe even both...*

RELAX

M

A breezy drink?

*Or perhaps the spicy flavour...*

ENJOY







# INTERIOR





# BEST MEMORIES





Relax in a cool interior environment  
Until the next destination...  
*which is only a few stairs away...*

DREAM





# CABINS





A photograph of a luxurious yacht cabin. The room features a large bed with white linens and a beige throw blanket, set on a grey upholstered base. The walls and ceiling are finished with dark wood paneling and recessed lighting. To the right, there is a wooden desk with a lamp and a small vase of flowers. A grey upholstered chair is positioned in front of the desk. On the left, a glass door provides a view into another part of the yacht. The overall atmosphere is elegant and sophisticated.

Imagine your cabin..  
Somewhere on top of the  
ocean...





M

*A pathway to first  
class reality...*

CLASS



# CABIN BINGING





# DINING





Fine dining on a sailing yacht  
is a luxurious once in a lifetime experience...

*But not if you come back again*

EXPERIENCE

EXPERIENCE





An aerial photograph of a wooden sailing ship with two masts, moving across clear turquoise water. The ship is leaving a white wake. In the background, there are several rocky islands with sparse green vegetation. The sky is not visible, and the overall scene is bright and clear.

M

DISCOVER A NEW DESTINATION...

DISCOVER A NEW DESTINATION



## SPECIFICATIONS

- \* **LENGTH** 43.0M / 141,04
- \* **BEAM** 8.60M / 28,2
- \* **DRAUGHT** 4,2 / 13,77
- \* **BUILDER** BY RSG DESIGNER STUDIO
- \* **BUILT** 2008 / 2022
- \* **CRUISING SPEED** 10,0 KNOTS
- \* **MAXIMUM SPEED** 13,0 KNOTS
- \* **FUEL CONSUMPTION** 150 L/HR

## ACCOMMODATION

- \* **CRUISING / OVERNIGHT GUESTS** 12/12
- \* **GUEST STATEROOMS** 6 (5 DOUBLE, 1 TWIN)
- \* **NUMBER OF CREW** 9

## FACILITIES & FEATURES

- \* **TENDER HIGHFIELD SIZE 6 M POWER 150**
- \* **TENDER NORDKAPP SIZE 6 M POWER 150**
- \* **SEA BOB F5 SR x2**
- \* **LIFT E-FOIL x2**
- \* **SAXDOR 320 GTO CHASE BOAT WITH TWIN MERCURY**
- \* **350 HP RACING ENGINES UP TO 12 PASSENGERS**  
(AVAILABLE AT EXTRA COST)

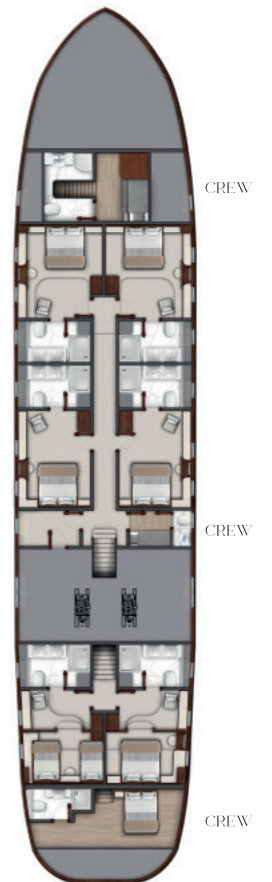
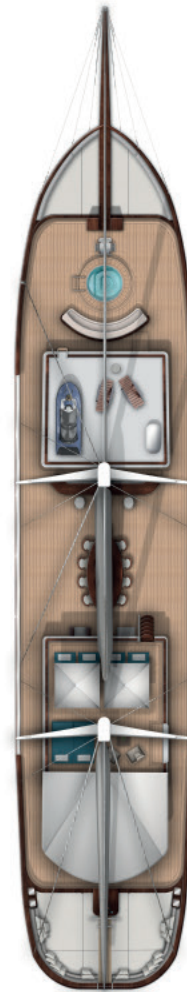
### OTHER FEATURES

- \* **WIFI**





# LAYOUT





Thanks for viewing...



MARE NOSTRUM

QUINTESSENTIAL LUXURY